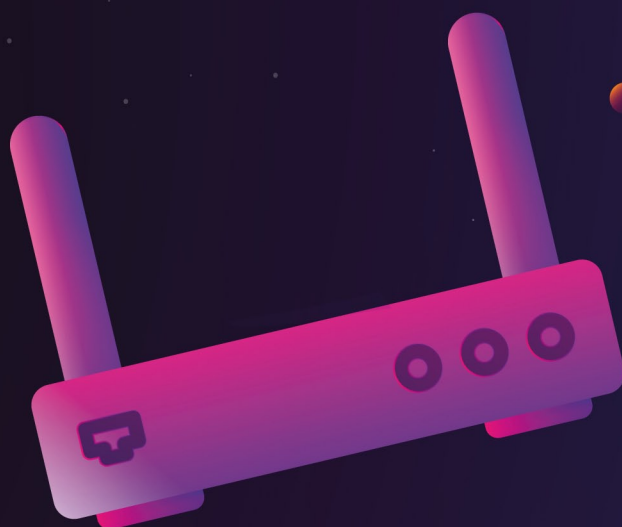


# Návod na nastavení routeru D-Link **DIR-605L**



# AKTIVACE SLUŽEB POMOCÍ INSTALÁTORU

Po zapojení Vašeho routeru podle samoinstalačního manuálu si otevřete Váš internetový prohlížeč (např. Internet Explorer, Mozilla Firefox, Google Chrome) a do pole pro zadávání www adresy zadáte:

<http://dlinkrouter.local>

## Další postup:

1. Po zadání a potvrzení klávesou **Enter** si od Vás router vyžádá **uživatelské jméno a heslo** (User Name, Password). Do pole s heslem není třeba nic vyplňovat (výrobce standardně heslo do routeru nenastavuje). Pokračujte tlačítkem **Login**.

Product Page : DIR-605L Hardware Version : B2 Firmware Version : 2.01MT

**D-Link**

**LOGIN**

Login to the router :

User Name : Admin

Password :  Login

**WIRELESS**

2. Po zdárném přihlášení by se Vám mělo zobrazit **administrační rozhraní routeru**. Pokud se Vám zobrazí, postupujete správně. Přejděte na tlačítko **Setup** a v levém menu zvolte položku **Wireless Settings**. V dolní části administračního rozhraní zvolte tlačítko **Manual Wireless Connection Setup**.

Product Page : DIR-605L Hardware Version : B2 Firmware Version : 2.01MT

**D-Link**

DIR-605L // **SETUP** ADVANCED TOOLS STATUS SUPPORT

INTERNET

**WIRELESS SETTINGS**

NETWORK SETTINGS

**WIRELESS SETTINGS**

The following Web-based wizards are designed to assist you in your wireless network setup and wireless device connection.

Before launching these wizards, please make sure you have followed all steps outlined in the Quick Installation Guide included in the package.

**WIRELESS NETWORK SETUP WIZARD**

This wizard is designed to assist you in your wireless network setup. It will guide you through step-by-step instructions on how to set up your wireless network and how to make it secure.

Wireless Connection Setup Wizard

**Note:** Some changes made using this Setup Wizard may require you to change some settings on your wireless client adapters so they can still connect to the D-Link Router.

**ADD WIRELESS DEVICE WITH WPS (WI-FI PROTECTED SETUP) WIZARD**

This wizard is designed to assist you in connecting your wireless device to your wireless router. It will guide you through step-by-step instructions on how to get your wireless device connected. Click the button below to begin.

Add Wireless Device with WPS

**MANUAL WIRELESS NETWORK SETUP**

If your wireless network is already set up with Wi-Fi Protected Setup, manual configuration of the wireless network will destroy the existing wireless network. If you would like to configure the wireless settings of your new D-Link Systems Router manually, then click on the Manual Wireless Network Setup button below.

Manual Wireless Connection Setup

Helpful Hints...

- If you already have a wireless network setup with Wi-Fi Protected Setup, click on **Add Wireless Device with WPS** to add new device to your wireless network.
- If you are new to wireless networking and have never configured a wireless router before, click on **Wireless Connection Setup Wizard** and the router will guide you through a few simple steps to get your wireless network up and running.
- If you consider yourself an advanced user and have configured a wireless router before, click **Manual Wireless Connection Setup** to input all the settings manually.
- **More...**

**WIRELESS**

3. V sekci **Wireless Network Settings – Wireless Network Name** si nastavte název Vaší nové bezdrátové sítě (předvyplněno „Dlink“).

Product Page : DIR-605L Hardware Version : B2 Firmware Version : 2.01MT

**D-Link**

DIR-605L // SETUP ADVANCED TOOLS STATUS SUPPORT

INTERNET WIRELESS SETTINGS NETWORK SETTINGS

**WIRELESS NETWORK**

Use this section to configure the wireless settings for your D-Link router. Please note that changes made in this section may also need to be duplicated on your wireless client.

To protect your privacy you can configure wireless security features. This device supports three wireless security modes including: WEP, WPA and WPA2.

Save Settings Don't Save Settings

**WIRELESS NETWORK SETTINGS**

Wireless Band : 2.4GHz Band

Enable Wireless :  Always  New Schedule

Wireless Network Name : **Dlink** (Also called the SSID)

802.11 Mode : Mixed 802.11n, 802.11g and 802.11b

Enable Auto Channel Scan :

Wireless Channel : 2.412 GHz - CH 1

Transmission Rate : Best (automatic) (Mbit/s)

Channel Width : 20/40 MHz(Auto)

Visibility Status :  Visible  Invisible

**WIRELESS SECURITY MODE**

Security Mode : None

Save Settings Don't Save Settings

**Helpful Hints...**

- Changing your Wireless Network Name is the first step in securing your wireless network. We recommend that you change it to a familiar name that does not contain any personal information.
- Enable Auto Channel Selection let the router can select the best possible channel for your wireless network to operate on.
- Enabling Hidden Mode is another way to secure your network. With this option enabled, no wireless clients will be able to see your wireless network when they perform a scan to see what's available. In order for your wireless devices to connect to your router, you will need to manually enter the Wireless Network Name on each device.
- If you have enabled Wireless Security, make sure you write down the WEP Key or Passphrase that you have configured. You will need to enter this information on any wireless device that you connect to your wireless network.
- More...

4. V položce **Wireless Security Mode** doporučujeme změnit **Security Mode** na **WPA-Personal**.

Do kolonky **PRE-SHARED KEY** vyplňte libovolné heslo. Pro posílení bezpečnosti sítě zvolte silné a bezpečné heslo (heslo musí mít minimálně 8 znaků). Ostatní volby ponechte předvyplněné tak, jak jsou.

Závěrem je třeba veškeré provedené změny uložit stisknutím tlačítka **Save Settings**, které se nachází v dolní části stránky.

Enable Wireless :  Always  New Schedule

Wireless Network Name : Dlink (Also called the SSID)

802.11 Mode : Mixed 802.11n, 802.11g and 802.11b

Enable Auto Channel Scan :

Wireless Channel : 2.412 GHz - CH 1

Transmission Rate : Best (automatic) (Mbit/s)

Channel Width : 20/40 MHz(Auto)

Visibility Status :  Visible  Invisible

**WIRELESS SECURITY MODE**

Security Mode : **WPA-Personal**

**WPA**

Use **WPA** or **WPA2** mode to achieve a balance of strong security and best compatibility. This mode uses WPA for legacy clients while maintaining higher security with stations that are WPA2 capable. Also the strongest cipher that the client supports will be used. For best security, use **WPA2 Only** mode. This mode uses AES(CCMP) cipher and legacy stations are not allowed access with WPA security. For maximum compatibility, use **WPA Only**. This mode uses TKIP cipher. Some gaming and legacy devices work only in this mode.

To achieve better wireless performance use **WPA2 Only** security mode (or in other words AES cipher).

WPA Mode : Auto(WPA or WPA2)

Cipher Type : TKIP and AES

Group Key Update Interval : 3600 (seconds)

**PRE-SHARED KEY**

Enter an 8- to 63-character alphanumeric pass-phrase. For good security it should be of ample length and should not be a commonly known phrase.

Pre-Shared Key : heslonawif

Save Settings Don't Save Settings

possible channel for your wireless network to operate on.

- Enabling Hidden Mode is another way to secure your network. With this option enabled, no wireless clients will be able to see your wireless network when they perform a scan to see what's available. In order for your wireless devices to connect to your router, you will need to manually enter the Wireless Network Name on each device.
- If you have enabled Wireless Security, make sure you write down the WEP Key or Passphrase that you have configured. You will need to enter this information on any wireless device that you connect to your wireless network.
- More...